



IS 15477 :2019
CM/L 7200256808



SHIVAZZA SUNDARAM
GROUP



Tile & Stone Adhesive | Grout & Many More...

**WELCOME
THE FUTURE OF
BUILDING**



Volume-1.6

Shaman Joshi..

SHIVAZZA SUNDARAM INDUSTRIES

www.shivazzasundaram.com

OUR INFRASTRUCTURE

369[®]
MAPISA
Let's Stick Forever



Let's Stick Forever



ABOUT US

369[®]
MAPISA
Let's Stick Forever

Since 1999, Shivazza Sundaram Group was founded with the legacy of 25 years of Customer trust satisfaction and services. Group has always brought innovative products in the market as per the customer requirement. Group is also into Building Material, Products, Construction & Film Production Business. The Estimated Turnover of the Group was recorded 100 + Crores in the Past.

MEANING OF MAPISA -MA, PI, SA- (माता-पिता का साथ)

Also "MAPISA" is on God Shiva's 3 names, MA: Mahabuddhi, PI: Pinaki & SA: Sadayogi. MA: MAHABUDDHI: - Bless us with intelligence PI: PINAKI: - Guide us to the righteous path SA: SADAYOGI: - Bless us with the discipline of yogi's life.

MEANING OF 369

Number 3 is a blessing number. Gods Brahma, Vishnu and Mahesh are the Trimurti. 3rd eye of God Shiva, which indicates Truth, Consciousness and Happiness.

Number 6 indicates our internal power, by awakening this, you can flow through the energy which will become a medium to meet your wishes. And with this energy you will also be able to solve your upcoming hurdles. It is believed that God has taken 6 days to build this Universe. According to Astrology Venus planet indicates number 6, which is the symbol of love.

Number 9 helps us in disconnecting us from our past, and reduces the self-doubt and negative vibes. So that we can accept new opportunities in future.



CORE VALUE

Ethics, Humility, Leadership, Innovation, Quality, Teamwork, Passion, Creativity, Commitment, Integrity and Honesty with Customers.



MISSION

To achieve Customer & Stakeholder Satisfaction with Brand Recognition. accompanying the value of 200 Crores by 2026 leading to India's one of the Promising Brand in Tiles and Adhesives.



VISION

"Our vision to create a better life with full of Positive energy, Love, Peace, Success, Health and Happiness." To Inspire the world with our innovative Products and design that enrich people's lives and contribute to social prosperity. MAPISA 369 is the destination of customers **Money and time.**

SUCCESS FOR US

Grow Together, Contribute Together, And Celebrate Together. Ethics, Humanity, Morality and Spirituality is the essential part of Success.



How to use:

The surface to be tiled should be thoroughly cleaned of dust, dirt, oil, grease, oil, polish etc. Add water in an empty bucket. Mix 3 parts adhesive powder and 1 part water (5-7 litres of water for a 20 kg bag), the amount of water may be increased or decreased as required to get the desired consistency. Mix the adhesive and water in a mixing machine. Spread the adhesive to the required thickness, using a flat surface first and then a serrated spatula for spreading. The tiles should be installed within 10 to 15 minutes of spreading the adhesive paste. Place the tiles on the surface to be tiled and tap the tiles gently so that the back side of the tiles gets fixed completely. Allow the tiling to set for 24 hours and fill the joints with grout the next day.



MAPISA³⁶⁹ SILVER CITE (GREY)

Usage:

Suitable for installation of ceramic and vitrified tiles on floor and wall
i.e. (30X45, 30X60, 60X60 cm)

Type	Product Name	Pot Life	Open Time	Tensile Strength (28 days)	Shear Adhesion (28 Days)	Coverage (20 KG BAG)
Type-1	Silver	2 Hours	25 Minutes	0.5 to 0.90 N/mm ²	1.0 to 1.25 N/mm ²	50-60 sq ft. (3mm thickness)

Packing: Available in 20 and 40 kg.

MAPISA³⁶⁹ GOLD C2T (GREY / WHITE)

Usage:

Suitable for installation of ceramic and vitrified tiles on floors and walls.
For granite frames, doors and interior surfaces.
i.e. (60X60, 60X120, 80X80 cm, Tile over Tile, etc.)

Type	Product Name	Pot Life	Open Time	Tensile Strength (28 days)	Shear Adhesion (28 Days)	Coverage (20 KG BAG)
Type-2	Gold	2 Hours	30 Minutes	1.10 to 1.25 N/mm ²	1.25 to 1.45 N/mm ²	50-60 sq ft. (3mm thickness)

Packing: Available in 20 and 40 kg.



MAPISA³⁶⁹ DIAMOND C2TE (GREY / WHITE)

Usages:

Vitrified Tiles i.e (60x120, 80x160, 120x180 cm) for tiling over tiles, framing of marble & granite and for tiles etc for interior & exterior surfaces on floor & wall.

Type	Product Name	Pot Life	Open Time	Tensile Strength (28 days)	Shear Adhesion (28 Days)	Coverage (20 KG BAG)
Type-2	Diamond	2 Hours	40 Minutes	1.40+ N/mm ²	1.40 to 1.50 N/mm ²	50-60 sq ft. (3mm thickness)

Packing: Available in 20 and 40 kg.



MAPISA³⁶⁹ DIAMOND PLUS C2TE (GREY/WHITE)

Usage:

Suitable for installation of all large sizes of Vitrified Tiles, Granite Frame, Natural Stone, Glass Mosaic, Tile on Tile etc on interior and exterior surfaces on floor and wall.
i.e. (120X180, 120X240, 80X240 cm etc.)

Type	Product Name	Pot Life	Open Time	Tensile Strength (28 days)	Shear Adhesion (28 Days)	Coverage (20 KG BAG)
Type-3	Diamond Plus	2 Hours	40 Minutes	1.50+ N/mm ²	1.50 to 1.75 N/mm ²	50-60 sq ft. (3mm thickness)

Packing: Available in 20 and 40 kg.



MAPISA³⁶⁹ PLATINUM C2TE S1 (GREY/WHITE)

Usage:

Suitable for installation of all large sizes of Vitrified Tiles, Granite Frames, Natural Stone, Glass Mosaic, Tile on Tile etc on interior and exterior surfaces like floor and wall.
i.e. (120X180, 120X240, 80X240 cm etc.)

Type	Product Name	Pot Life	Open Time	Tensile Strength (28 days)	Shear Adhesion (28 Days)	Coverage (20 KG BAG)
Type-3	Platinum	2 Hours	40 Minutes	1.75+ N/mm ²	1.60 to 2.00 N/mm ²	50-60 sq ft. (3mm thickness)

Packing: Available in 20 and 40 kg.



MAPISA³⁶⁹ PLATINUM PLUS C2TE S1 (GREY/WHITE)

Usage:

Suitable for all types of heavy & large size tiles, Italian marble, granite, natural stone, glass mosaic, tile on tile & ceiling installation.
i.e. (120X240, 120X180, 160X320, 80X240, 80X300 cm etc.)

Type	Product Name	Pot Life	Open Time	Tensile Strength (28 days)	Shear Adhesion (28 Days)	Coverage (20 KG BAG)
Type-4	Platinum Plus	2 Hours	45 Minutes	2.50+ N/mm ²	2.00 to 2.50 N/mm ²	50-60 sq ft. (3mm thickness)

Packing: Available in 20 and 40 kg.



PUA-369 PU BASE THIN SET ADHESIVE

369[®]
MAPISA
Let's Stick Forever

PUA Thin set Adhesive is a two component adhesive, ready to be mixed for bonding all types of tiles and stones on various substrates including metal surfaces and drywall boards, Mapisa 369 PUA-369 is suitable for interior as well as exterior wall and floor applications.

विश्वास का जुड़ाव, सगे रिश्तों सी मज़बूती
'MAPISA 369'



A two part polyurethane based solvent and water free tile adhesive. It is flexible, waterproof, high adhesion and mechanical resistant.

Area of Use:

It helps in interior and exterior bonding of wall and floor ceramic tiles, vitrified tiles, marble and all natural stones. Concrete, screed, render, asphalt, wood, metal, PVC, cement sheets, etc.

It can be used in absorbent and non-absorbent substrates.

Can be used in rigid substrates.

Advantages:

- High strength and adhesion.
- Water proof and flexible.
- It is suitable for laying concrete, screed, render, asphalt, wood, metal, PVC, polyester,
- Good resistance to acids and other chemicals.
- High deformability and highly thyrotropic.

Coverage: 1.5 kg/m² per 3 mm of thickness

Color: white

Packing : 4 kg

Technical Details:

Testing Parameter	Specification
PU - Mixing ratio	Part-A: Part-B = 4:1
Product Color	Part A - White paste Part B (Hardener) - Base White
Workability	Easy mixing & self curing
Application	Easy notching
Open time @23-27	>= 1 hrs
Pot life	40-45 Minutes
Working Time	50 Minutes (Approx)
Adjustable Time	65 Minutes (Approx)
Product Setting Time	Initial : 6 hours Final : 8 hours Set to : Movement 12 hours Final Movement 7 days



Metal Staircase



Tile on Plywood

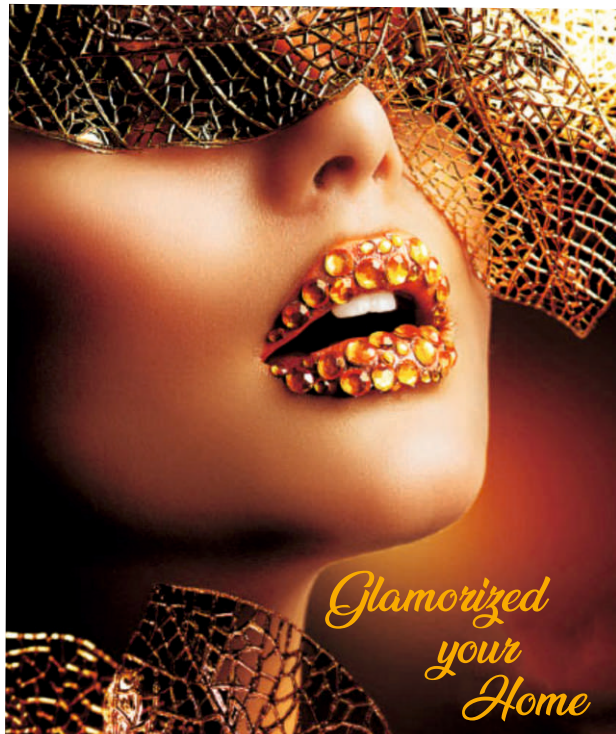
MAPISA³⁶⁹ LOOKOUT 300 & GLAM

3 COMPONENT EPOXY GROUT

MAPISA³⁶⁹
Let's Stick Forever

STRONG BOND WITH COLOURS

Lookout 300 Grout is a three part epoxy based joint filler. It can be easily applied to joints of vitrified tiles, glass mosaic tiles and other types of tiles. It is also used for filling joints of marble, natural stone, composite stone and quartz. Its most special feature is that after application, it can be completely cleaned from any surrounding surface by just rubbing with water.



APPLICATION AREA

Suitable for stain, water and chemical resistant surfaces in any residential or commercial construction site. Used in kitchens, bathrooms, swimming pools, fountains, hospitals, operation theatres, sterilization rooms, restaurants, cafes and for filling joints of modern tiles which are heavily walked upon.

HOW TO USE

Clean the area to be applied Mix Part A- Resin and Part B- Hardener in a bucket Add Part C- Filler Powder in a bucket, preferably with a mechanical stirrer or manually Mix for 5 minutes Apply Grout on the prepared surface Check the joints for hardening after 30-40 minutes Use a damp cloth to remove excess paste from the tile surface After 24 hours your floor is ready for use.

Packaging : Available in 1 Kg and 5 Kg.

LOOKOUT-300

(3 COMPONENT EPOXY GROUT)



LOOKOUT-GLAM

(3 COMPONENT EPOXY GROUT)



MAPISA³⁶⁹ LOOKOUT 200

2 COMPONENT EPOXY GROUT

MAPISA³⁶⁹
Let's Stick Forever

STRONG BOND WITH COLOURS

Lookout 200 Grout is a two part epoxy based joint filler. It can be easily applied to joints of vitrified tiles, glass mosaic tiles and other types of tiles. It is also used for joints of marble, natural stone, composite stone and quartz stone. Its most special feature is that after application, it can be completely cleaned from any surrounding surface by just rubbing with water.

APPLICATION AREA

Suitable for stain, water and chemical resistant surfaces in any residential or commercial construction site. Used in kitchens, bathrooms, swimming pools, fountains, hospitals, operation theatres, sterilization rooms, restaurants, cafes and for filling joints of modern tiles which are heavily walked upon.

HOW TO USE

Clean the area to be applied Mix Part A- Resin and Part B- Hardener in a bucket. Mix for 5 minutes preferably with a mechanical stirrer or manually Apply grout on the prepared surface Check the joints for hardening after 30-40 minutes Use a damp cloth to remove excess paste from the tile surface After 24 hours your floor is ready for use.

Packaging : Available in 1 Kg and 5 Kg.



MAPISA³⁶⁹ M-40 (TILE GROUT ADMIX)



M-40 (TILE GROUT ADMIX) This liquid polymer additive is specially designed synthetic polymer additive for use with cement based sanded grout / unsanded grout.

FEATURES

Applied by mixing with Eco (unsanded grout) & Super (sanded grout) cement based grout for filling joints. Improves adhesion strength on tiles. Provides hard, solid and stain resistant joints to grouts. Resistant to permanent joints. Increases abrasion resistance of grout.

AREA OF USE

Suitable for waterlogged conditions, for all types of cements for indoor and outdoor applications. Suitable for internal and external use.

Packaging : Available in 250 ml, 400 ml.

MAPISA³⁶⁹ CEMENTITIOUS GROUTS ECO

(Unsanded Grout)

MAPISA³⁶⁹
Let's Stick Forever

Polymer Modified for tiles and stone Suitable for joint width of 1mm to 3mm. It is a polymer modified cementitious tile grout with water resistant.

FEATURES

Suitable for all types of tiles and natural stones. Eco Tile Grout for Indoor Suitable for joints sized 1mm to 3mm Good compression and flexural strength. Long lasting joints Suitable for floors, walls. Provides uniform and superior color. Used with M-40 grout admixtures to achieve strong, hard, durable results. It is highly durable and water resistant.

COLOURED JOINT Non Brink Grout Suitable for joint width of 1-3mm.

AREAS & SUBSTRATES

Suitable for all types of tiles and stones For floors, walls For better performance For indoor and outdoor use in dry and wet areas. Available in various colours (please refer shade card)

Packaging : Available in 1Kg.

Coverage : Varies as per tile size and joint width.



MAPISA³⁶⁹ SUPER TILE GROUT

(Sanded Grout)

Super Tile Grout is a premium grade, high performance joint filler suitable for tiles / stones for 3mm to 12mm joint width. It is a premium grade, sand based grout for filling joints. It is a strong blend of high quality OPC cement with high polymer content. Excellent flexural strength, crack free, non shrinkage, durable and water resistant material.



EXCELLENT WATERPROOF PROPERTIES

Provides a non shrink and crack resistant flooring especially suitable for exterior use with resistant tile or stone joints.

APPLICATIONS

Use grout admix for better performance. Provides strength with beauty. Suitable admixture for 3-12mm wide joints. Suitable for grouting of stones on roof.

AREAS & SUBSTRATES

Tiles - For walls & floors For indoor & outdoor applications in dry & wet areas, All types of tiles & stones for interior & exterior use For walls & facades.

Packaging : Available in 1Kg.

Coverage : Varies as per tile size and joint width.

White

Ivory

Light grey

Dark grey

Black

Brown

Terracotta

MAPISA³⁶⁹ T.K.D.(Tiles Doctor)

MAPISA³⁶⁹
Let's Stick Forever

METHOD OF APPLICATION

Apply TKD on the back surface of stone, marble, granite slabs with a brush and let it dry for 15-30 minutes. And apply adhesive on the surface (where TKD was applied) with a trowel and immediately stick the stone, marble, granite slabs on the floor and walls. Let it dry.

SHELF LIFE

Store between 5 to 45 degree C in a shaded area, away from direct sunlight. Protect from extreme temperatures. TKD has a shelf life of 12 months when stored as prescribed.

Packaging : Available in 500gm & 1Kg.



MAPISA³⁶⁹ M-KLEENO (TILE CLEANER)



M-Kleeno Heavy Duty Tile Cleaner Suitable for use on ceramic, vitrified, mosaic tiles, bath tubs, wash basins and concrete etc. for indoor and outdoor applications. High quality quick action, acid based cleaner and degreasing agent.

FEATURES

- Removes cement stain residue.
- Removes residue, efflorescence and most oxide stains.
- Removes dirt, grease etc from tiled surface.
- Protects from bacteria and provides hygienic surface

NOTE

- Do not use on surfaces that are resistant to acids.
- Like Marble/Terrazzo/Engineered Stone etc.

Packaging : Available in 1 Ltr & 5 Ltr.

MAPASTIC SBR Latex is modified Styrene Butadiene Emulsion specially designed for use as a Bonding Aid and gauging liquid for cementitious systems. It is resistant to hydrolysis and can therefore be used for external applications.

रक्षा के साथ सुरक्षा 'MAPISA 369' का भरोसा



HOW TO USE

Surface Preparation: All substrates should be cleaned and free from dust, plaster, oil, paint, grease, corrosion deposits and any other damaging substances. Laitance should be removed by mechanical means. Smooth substrates should be mechanically roughened to provide adequate keying. Corroded reinforcing steel should be exposed and cleaned to remove all loose scale and corrosion deposits.

Priming: Reinforcing steel should be primed with MAPISA 369 Primer immediately after cleaning. The concrete substrate should be thoroughly wetted with water and any excess water removed before priming by thoroughly rubbing in a slurry coat of 1 volume MAPISA 369 SBR Latex to 1 volume water and 3 volumes fresh cement. The cement should be gradually mixed into the liquid to obtain a smooth consistency. Stir frequently during use to compensate for settlement.

USES

To modify and improve the bonding of floor toppings, renderings and mortars; repair of worn, damaged and chipped concrete, repair of large cracks: polymer modified floor screeds; waterproof plasters for masonry and slurries.

Coverage:

Approx MAPASTIC SBR LATEX : WATER : CEMENT
1:1:3 (Coverage : Approx. 4-5m²/L)

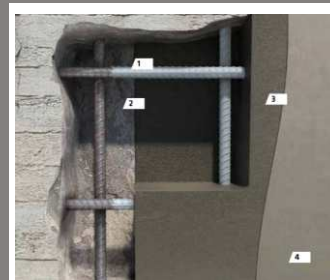
Patching and repair mortars and palster for masonry :

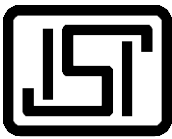
Cement	50 kg
Zone sand	150 kg
Mapisa SBR Latex	5 - 9 L
Recommended water addition	11 - 15 L
Recommended thickness	8 - 30 mm

Heavy duty floor Screeds Cement

Cement	50 kg
3 - 6mm Granite Chips	75 kg
Zone sand	75 kg
Mapisa SBR Latex	5 - 9 L
Recommended water addition	8 - 12 L
Recommended thickness	10-25 mm

Packing : 500 ml, 1 Ltr, 5 Ltr Bucket

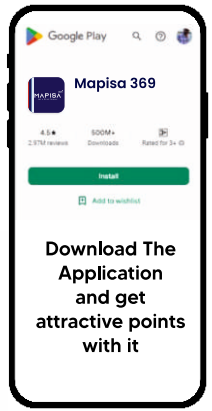




IS 15477 :2019
CM/L 7200256808



Scan The Qr Code Through
The App And Earn Points



OUR GROUP PRESTIGIOUS CLIENT'S



Manufactured By :

SHIVAZZA SUNDARAM GROUP

24-25, 1st Floor, Rivera Arcade, 100Ft Road, Prahlaad Nagar, Satellite,
Ahmedabad. Gujarat-380015

Customer Care : 87 99 60 60 99

07949175962 | admin@shivazzasundaram.com

www.shivazzasundaram.com

